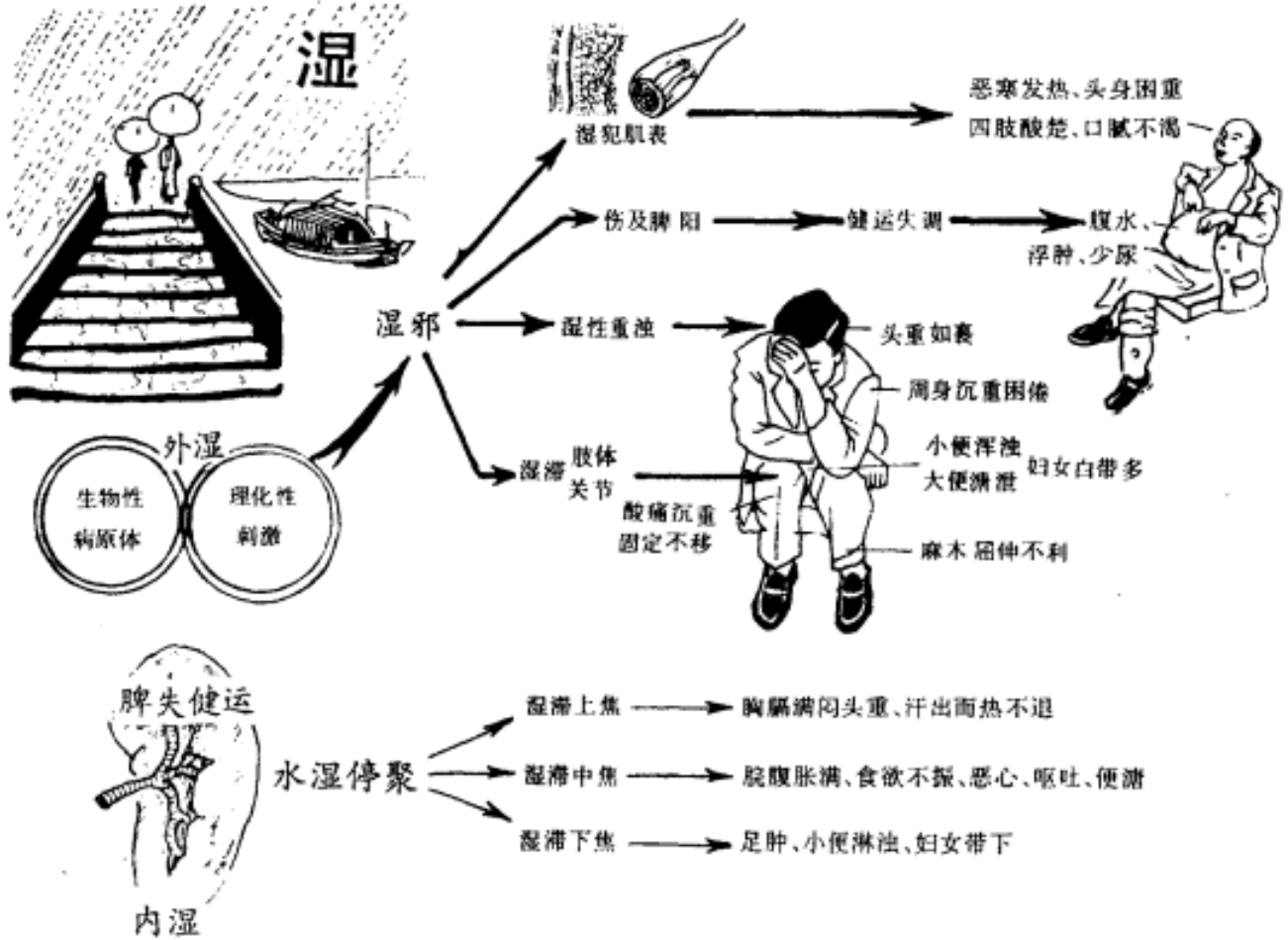
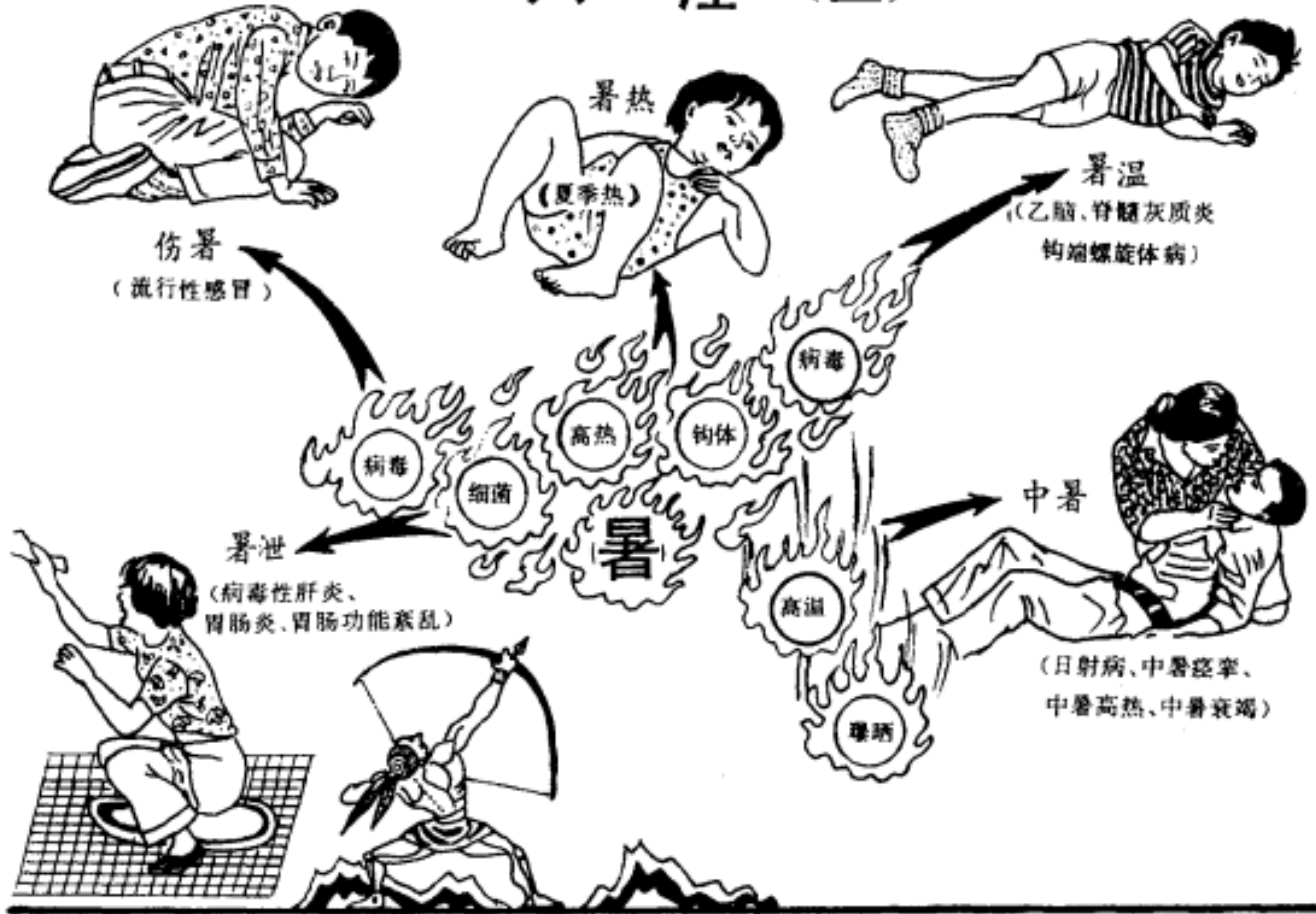
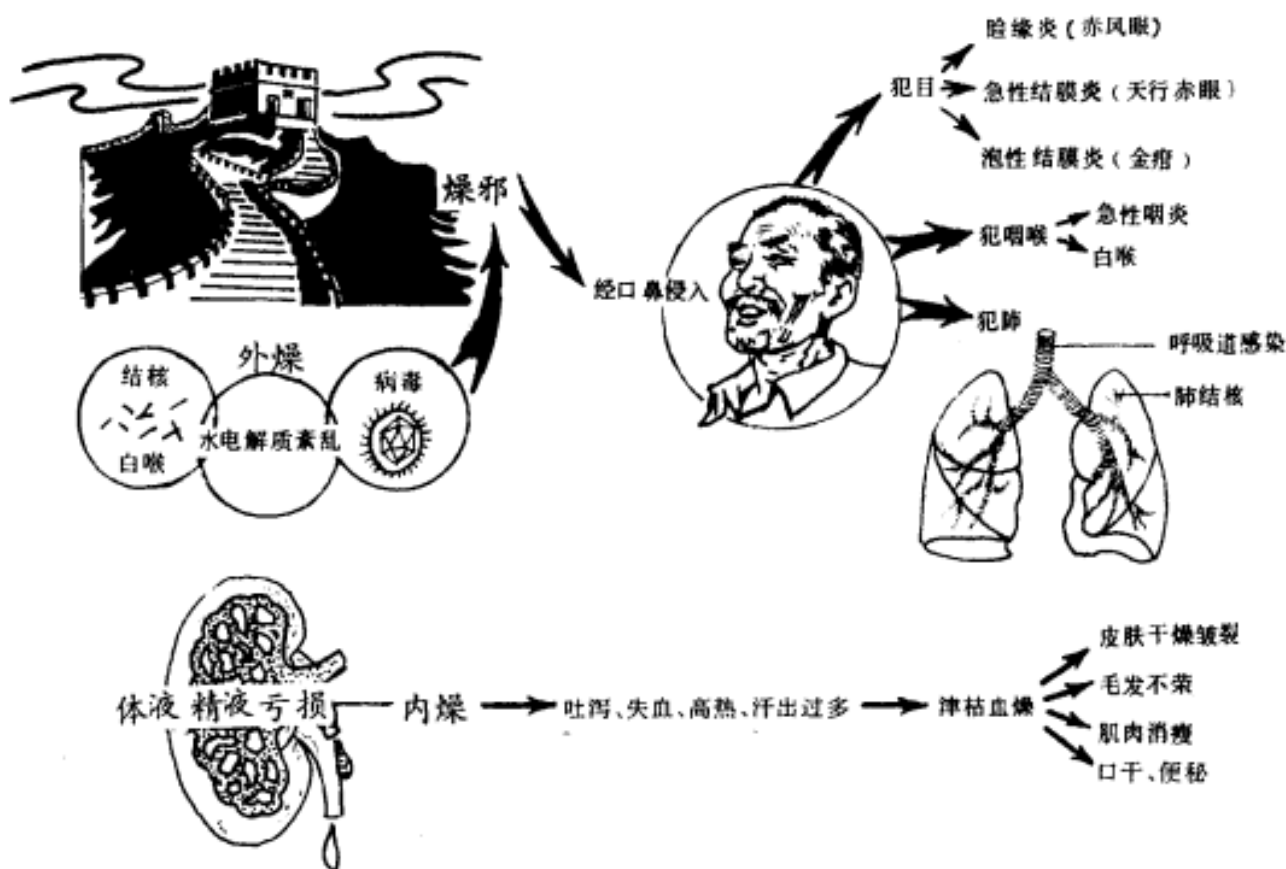


六淫 (二)

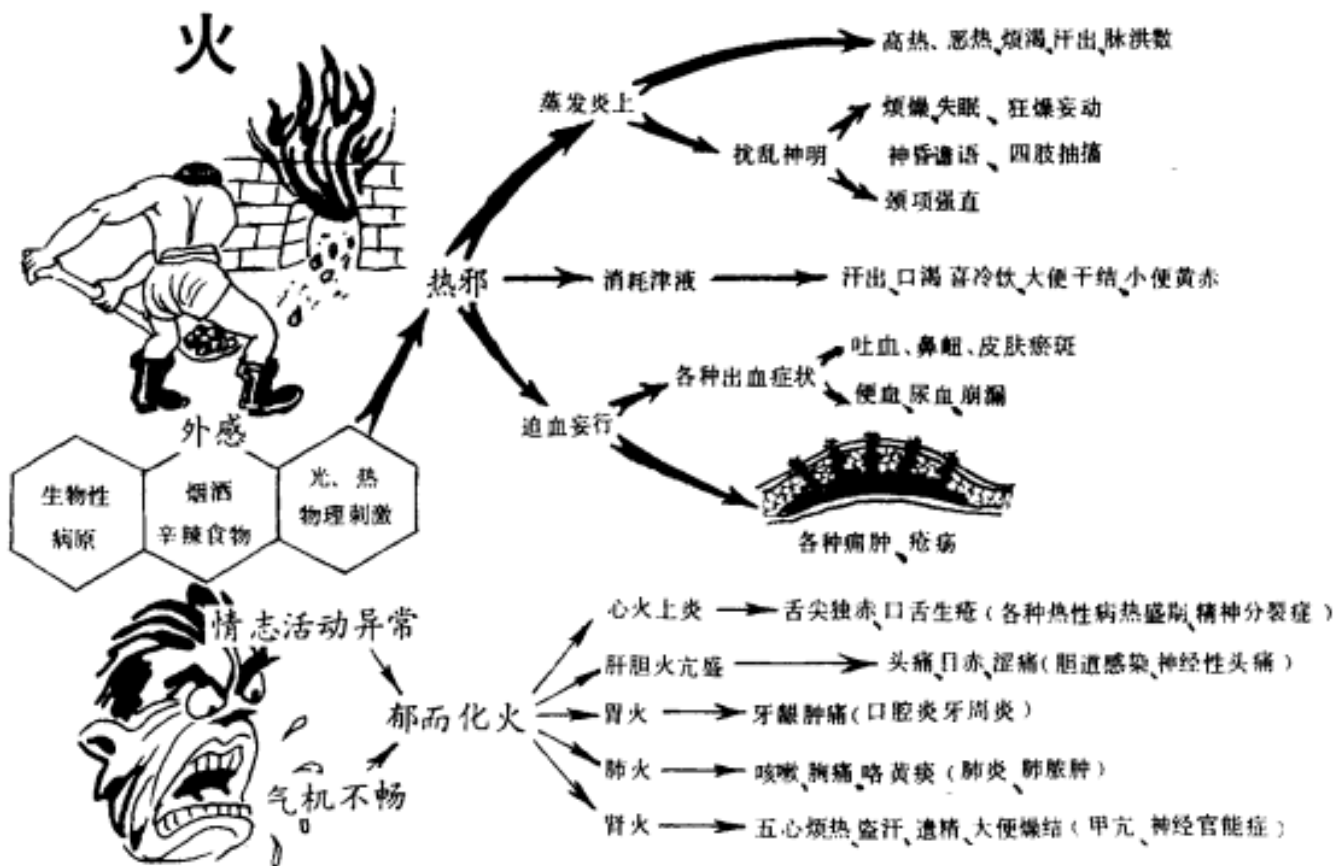


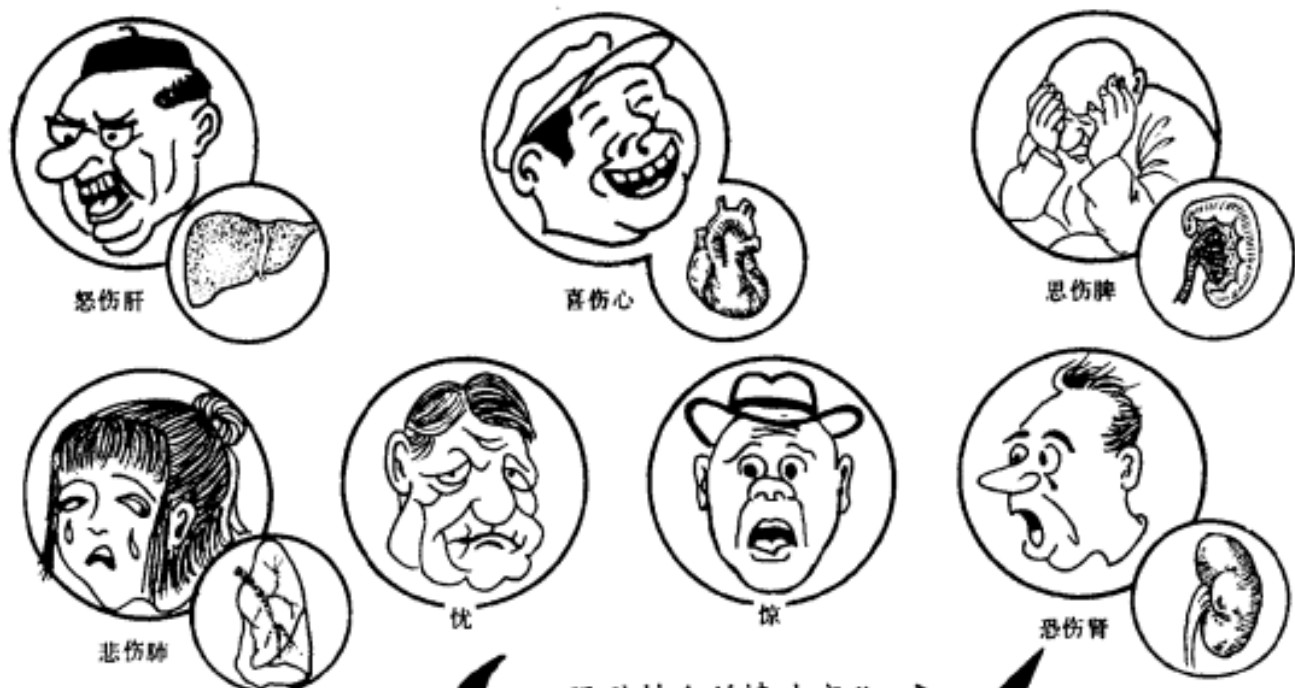
六淫 (三)

燥



火





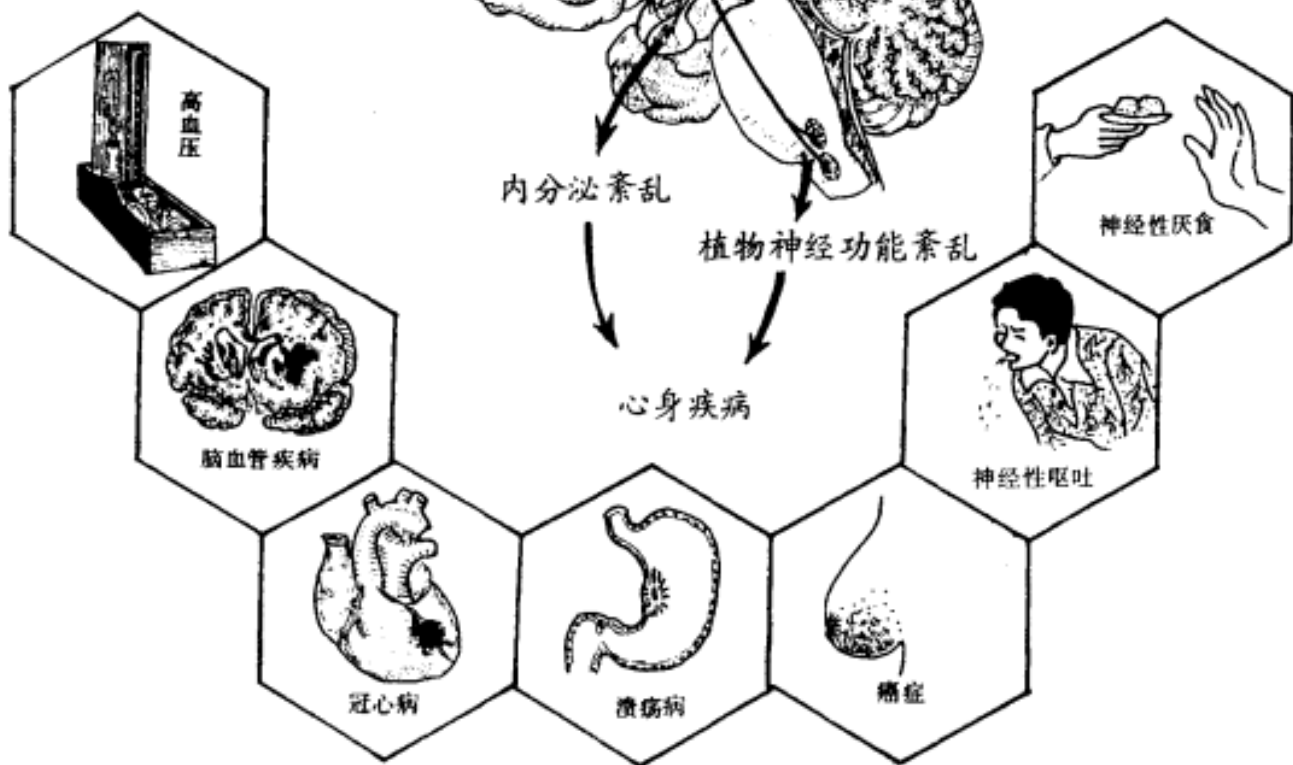
强烈持久的情志变化

大脑皮层功能紊乱

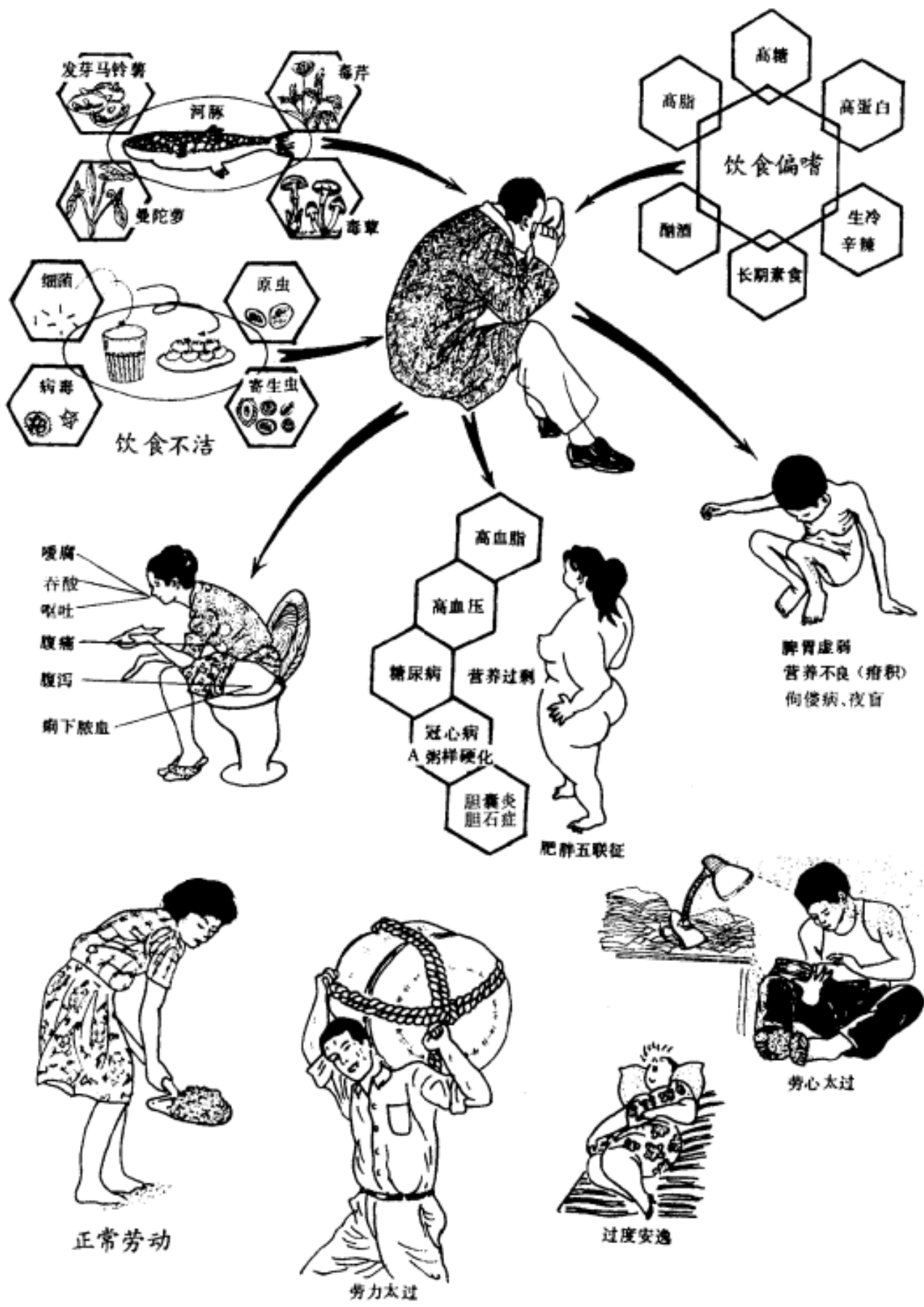
内分泌紊乱

植物神经功能紊乱

心身疾病

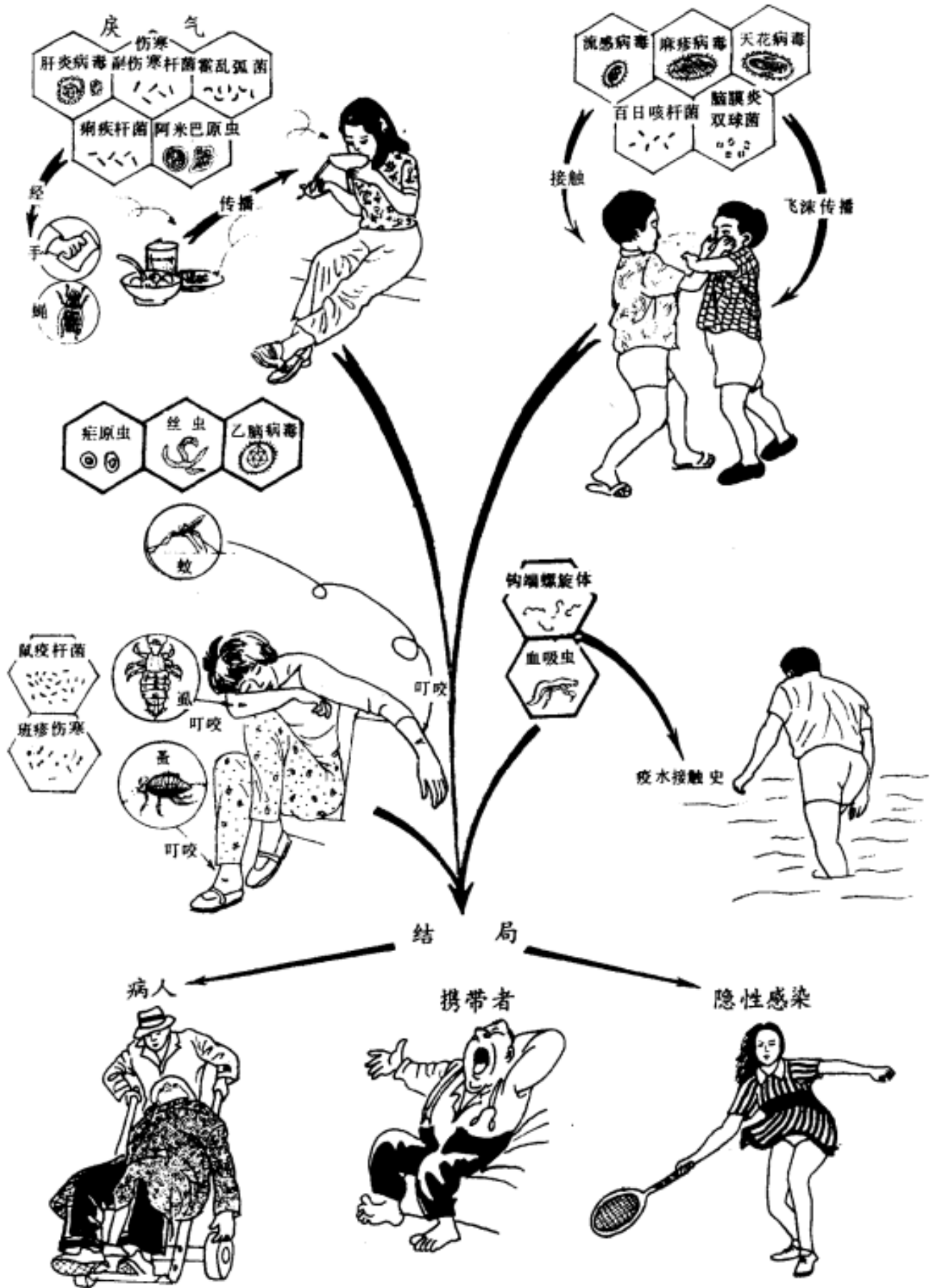


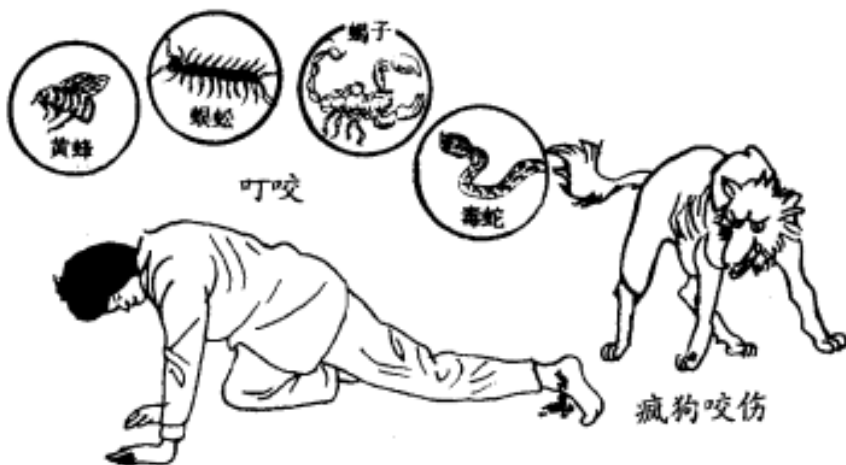
七情



饮食、劳逸

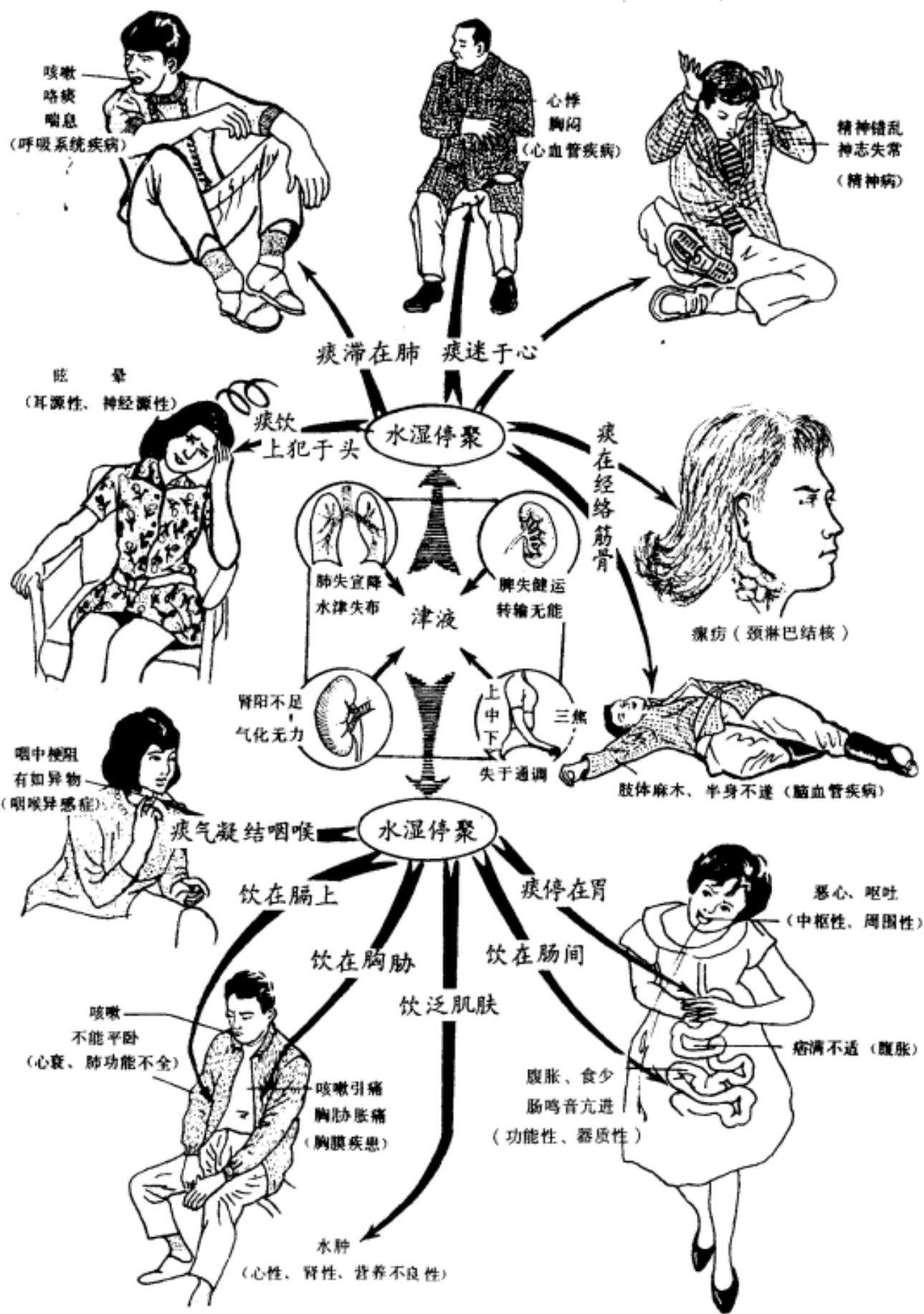
疫 疠 (传染病)





外伤与虫兽所伤

痰 饮



瘀 血

共同特征

肌肤甲错

面色黧黑
毛发不荣

发绀



疼痛

刺痛
拒按 固定不移

肿块



出血



脉细涩



瘀在肺

口唇青紫

胸闷

心绞痛

瘀在心

瘀在胁或腹

呕血、黑便

瘀在胞宫

小腹疼痛

包块

月经不调

崩漏

瘀在肢体

肢体麻木疼痛

运动不灵

痿痹